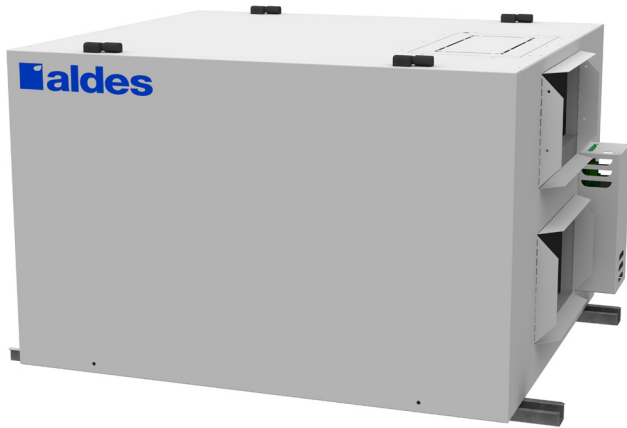




LIGHT COMMERCIAL
E650L-Fi & E650L-Ri
 Energy Recovery Ventilator
 200-760 CFM Range

PRODUCT
 SPECIFICATIONS
 & TECHNICAL
 DATA



E650L-Fi & E650L-Ri

The E650L energy recovery ventilator provides high-efficiency energy recovery. The unit uses a high latent transfer enthalpic core that can withstand a wide range of environmental conditions. The E650L produces approximately **705 CFM** at 0.20 in.w.g (ESP). It is powerful enough for schools, restaurants, offices, and other small businesses.

The E650L is ideal for cold-weather applications. The E650L-Fi shuts down the fan for the outdoor air supply during defrost cycles, while the E650L-Ri uses a fifth port with a motorized damper to defrost the core with recirculated warm air from inside the building.

FEATURES

- Plate-type high latent transfer enthalpic core
- Quiet operation
- Multiple filter options
- Efficient and economical operation
- Indoor application

CASING

Material: Painted galvanized
 Insulation: 1" R4 rated
 Drain Connection: Ø 1/2" (Ø 13 mm)
 Duct Connections: 14" x 8" (356 mm x 203 mm)
 Width: 36-1/4" (921 mm)
 Height: 23-7/8" (606 mm)
 Depth: 32-1/8" (816 mm)
 Unit Weight: 135 lbs (61 kg); 145 lbs (66 kg) with recirculation
 Shipping Weight: 189 lbs (86 kg)
 199 lbs (90 kg) with recirculation

PLATE EXCHANGER

Standard: High Latent Transfer
 (sensible and latent heat transfer)

Quantity: 2
 Pitch: 0.10" (2.5 mm)
 Dimensions: 12" x 12" x 15" (305 mm x 305 mm x 381 mm)



MOUNTING

Supplied with base rails. Support rod by others.

BLOWERS

Quantity: 2
 Type: Backward-inclined motorized impeller, direct-drive electronically commutated motors

FILTERS

Number: 4
 Type: Aluminum (P/N: 683901)
 Optional: MERV 8 (P/N: 683902), Carbon (P/N: 683903), or High Efficiency/MERV13 Equivalent (P/N: 683904)

Additional Air Pressure Drop with Optional Filters				
Filter Type	Airflow CFM (m³/h)			
	300 (510)	500 (850)	700 (1190)	900 (1530)
MERV 8	0.04	0.08	0.15	0.22
Carbon	0.04	0.08	0.15	0.22
High Efficiency	0.22	0.35	0.48	0.63

ELECTRICAL REQUIREMENTS

120 VAC, 60 Hz, 5.5 A

FROST CONTROL

Cycles controlled by a temperature sensor when outdoor temperatures fall below 14°F (-10°C).

- Standard: Exhaust Defrost (E650L-Fi)
- Optional: Recirculation Defrost (E650L-Ri)

CONTROLS

24 VAC, 10 VA output for supply and exhaust dampers
 Low-voltage dry contact (24 VAC, 20 VA) for:

- Occupancy Control (start/stop)
- Fan Interlock (NO and NC)
- Speed Selection
- Exhaust/Recirculation (with E650L-Ri)

Compatible With:

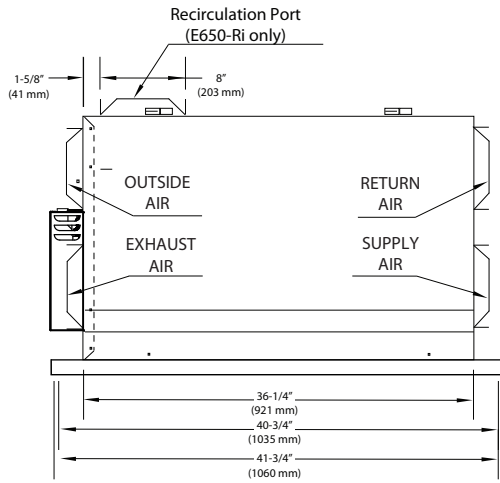
- Digital Multifunction Control (P/N: 611242FC)
- Mode Control (exchange or recirculation) (P/N: 611230)
- Humidity Control (P/N: 611224)
- Speed Control (Low/Intermittent/High) (P/N: 611229)
- 20/40/60 Minute Timer (P/N: 611228)

APPROVALS

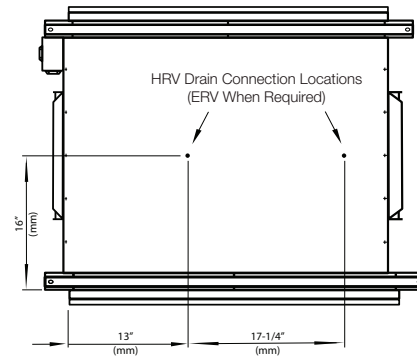
Meets Standards:
 • UL 1812 and C22.2 no113



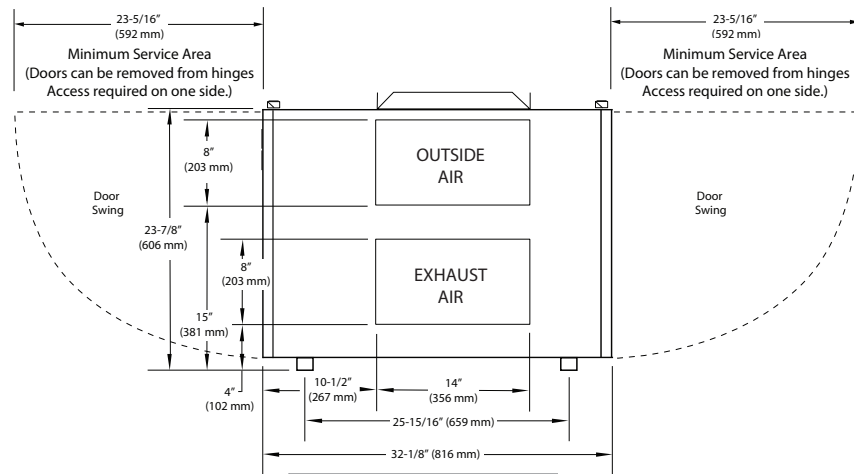
Dimensions



FRONT VIEW

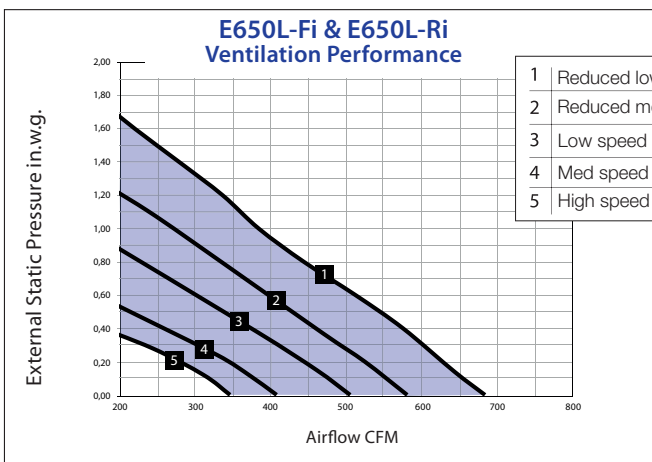


BOTTOM VIEW



SIDE VIEW

Performance



	Sensible Recovery %	Latent Recovery %	Total Recovery %
100 % Air Flow Cooling	70%	60%	67%
75 % Air Flow Cooling	74%	65%	71%
100% Air Flow Heating	70%	47%	56%
75 % Air Flow Heating	74%	52%	60%
AHRI Core Reference Number	10346213		

© 2018 American ALDES Ventilation Corporation. Reproduction or distribution, in whole or in part, of this document, in any form or by any means, without the express written consent of American ALDES Ventilation Corporation, is strictly prohibited. The information contained within this document is subject to change without prior written notice.