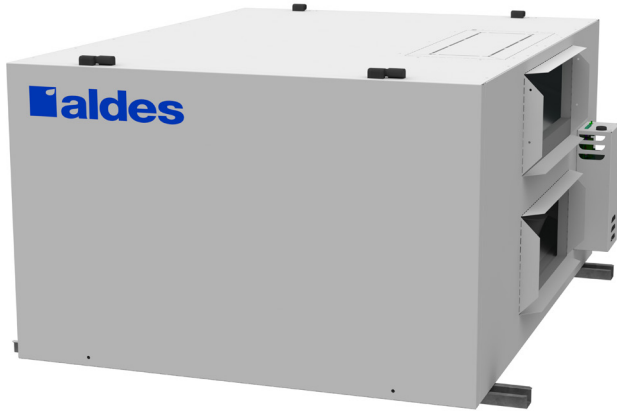




LIGHT COMMERCIAL
H1100A-Fi-EC & H1100A-Ri-EC
 Heat Recovery Ventilator
 300-1380 CFM Range

PRODUCT
 SPECIFICATIONS
 & TECHNICAL
 DATA



H1100A-Fi-EC & H1100A-Ri-EC

The H1100A-Fi-EC and H1100A-Ri-EC heat recovery ventilators provide up to 1380 CFM of fresh outdoor air while exhausting stale indoor air. The units make use of Aldes' AHRI Certified Aluminum cores that deliver superior heat transfer and can be used in any climate zone. The highly efficient and quiet EC motors use on average 50-75% less electricity than typical PSC motors, significantly increasing return on investment.

The H1100A-Fi-EC and H1100A-Ri-EC is recommended for smaller non-residential spaces or dedicated zones within larger buildings, such as classrooms, common areas of residential complexes and indoor parking garages.

Designed for versatile indoor installation, Aldes light commercial ventilators can fit almost anywhere and still provide easy access to the internal components with removable access doors on both sides. The units also offer a choice of five continuous operation speeds and a demand-controlled high-speed exchange mode.

CASING

- Material: Painted galvanized steel
- Insulation: 1" R4 rated
- Drain Connection: Ø 1/2" (Ø 13 mm)
- Duct Connections: 20" x 8" (508 mm x 203 mm)
- Width: 36-1/4" (921 mm)
- Height: 23-7/8" (606 mm)
- Depth: 47-1/4" (1200 mm)
- Unit Weight: 223 lbs (101 kg)
233 lbs (106 kg) with recirculation
- Shipping Weight: 278 lbs (126 kg)
288 lbs (131 kg)

PLATE EXCHANGER

- Standard: Aluminum (sensible heat transfer)
- Quantity: 3
- Pitch: 0.12" (3 mm)
- Dimensions: 11.8" x 11.8" x 15" (305 mm x 305 mm x 381 mm)



MOUNTING

Supplied with base rails. Support rod by others.

BLOWERS

Quantity: 4
 Type: Backward-inclined motorized impeller, direct-drive EC Motors, variable speed, external rotor

FILTERS

Number: 6
 Type: Aluminum (P/N: 683951)
 Optional: MERV 8 (P/N: 683952), Carbon (P/N: 683953), or High Efficiency/MERV13 Equivalent (P/N: 683954)

Additional Air Pressure Drop with Optional Filters				
Filter Type	Airflow CFM (m³/h)			
	500 (850)	800 (1360)	1100 (1870)	1400 (2380)
MERV 8	0.04	0.08	0.15	0.22
Carbon	0.04	0.08	0.15	0.22
High Efficiency	0.22	0.35	0.48	0.63

ELECTRICAL REQUIREMENTS

208-230 VAC, 60 Hz, 5.6 A
 Supplied with 6' power cord with NEMA 6-15 plug

FROST CONTROL

Cycles controlled by a temperature sensor when outdoor temperatures fall below 23°F (-5°C).

- Standard: Exhaust Defrost (H1100A-Fi-EC)
- Optional: Recirculation Defrost (H1100A-Ri-EC)

CONTROLS

24 VAC, 10 VA output for supply and exhaust dampers
 Low-voltage dry contact (24 VAC, 20 VA) for:

- Occupancy Control (start/stop)
- Fan Interlock (NO and NC)
- Speed Selection
- Exhaust/Recirculation (with H1100A-Ri-EC)

Compatible With:

- Digital Multifunction Control (P/N: 611242FC)
- Mode Control (exchange or recirculation) (P/N: 611230)
- Humidity Control (P/N: 611224)
- Speed Control (Low/Intermittent/High) (P/N: 611229)
- 20/40/60 Minute Timer (P/N: 611228)

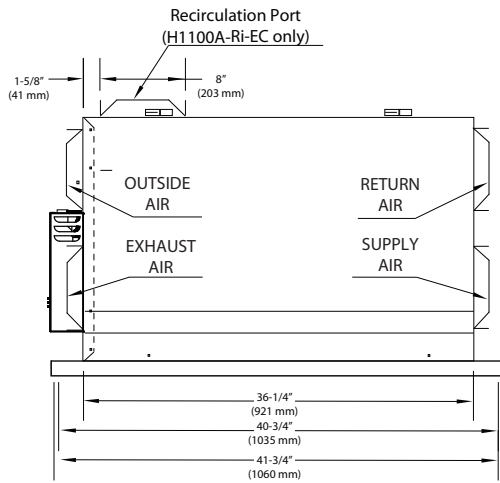
APPROVALS

Meets Standards:
 • UL 1812 and C22.2 no113

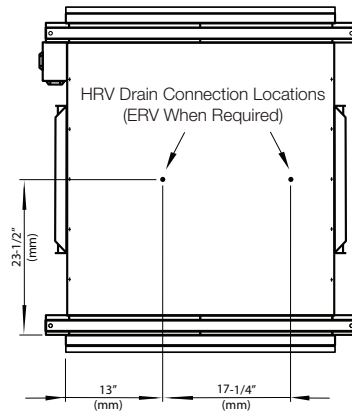
Listed:



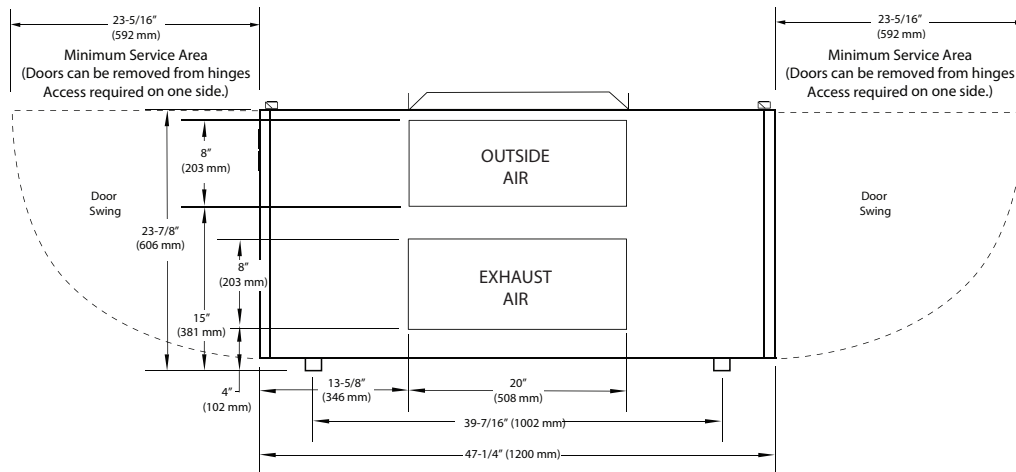
Dimensions



FRONT VIEW

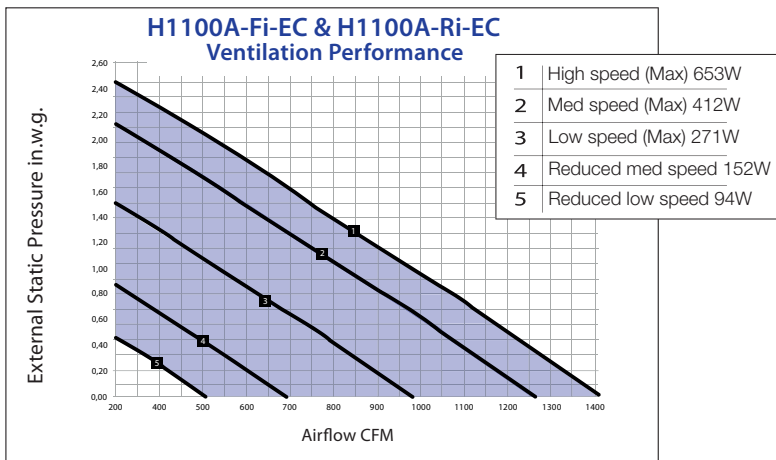


BOTTOM VIEW



SIDE VIEW

Performance



	Sensible Recovery %
100 % Air Flow Cooling	46%
75 % Air Flow Cooling	50%
100 % Air Flow Heating	56%
75 % Air Flow Heating	56%
AHRI Core Reference Number	7987456

© 2018 American ALDES Ventilation Corporation. Reproduction or distribution, in whole or in part, of this document, in any form or by any means, without the express written consent of American ALDES Ventilation Corporation, is strictly prohibited. The information contained within this document is subject to change without prior written notice.