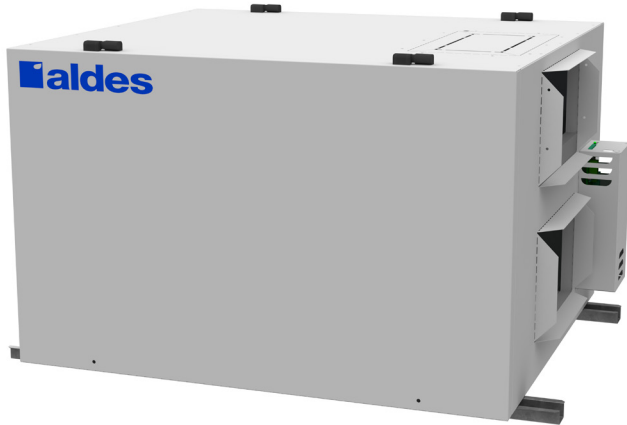




LIGHT COMMERCIAL  
**H650A-Fi & H650A-Ri**  
 Heat Recovery Ventilator  
 200-850 CFM Range

PRODUCT  
 SPECIFICATIONS  
 & TECHNICAL  
 DATA



**H650A-Fi & H650A-Ri**

The H650A heat recovery ventilator provides high-efficiency heat recovery with no core cross contamination. The unit uses a durable aluminum core that can withstand a wide range of environmental conditions. The H650A produces approximately **800 CFM** at 0.20 in.w.g (ESP). It is powerful enough for restaurants, offices, and other small businesses.

The H650A is ideal for cold-weather applications. The H650A-Fi shuts down the fan for the outdoor air supply during defrost cycles, while the H650A-Ri uses a fifth port with a motorized damper to defrost the core with recirculated warm air from inside the building.

**FEATURES**

- Plate-type aluminum cores
- Quiet operation
- Multiple filter options
- Efficient and economical operation
- Indoor application

**CASING**

Material: Painted galvanized steel  
 Insulation: 1" R4 rated  
 Drain Connection: Ø 1/2" (Ø 13 mm)  
 Duct Connections: 14" x 8" (356 mm x 203 mm)  
 Width: 36-1/4" (921 mm)  
 Height: 23-7/8" (606 mm)  
 Depth: 32-1/8" (816 mm)  
 Unit Weight: 147 lbs (67 kg); 157 lbs (71 kg) with recirculation  
 Shipping Weight: 201 lbs (91 kg)  
 211 lbs (96 kg) with recirculation

**PLATE EXCHANGER**

Standard: Aluminum (sensible heat transfer)  
 Quantity: 2  
 Pitch: 0.12" (3 mm)  
 Dimensions: 11.8" x 11.8 x 15" (305 mm x 305 mm x 381 mm)



**MOUNTING**

Supplied with base rails. Support rod by others.

**BLOWERS**

Quantity: 2  
 Type: Backward-inclined motorized impeller, direct-drive PSC, variable speed, external rotor

**FILTERS**

Number: 4  
 Type: Aluminum (P/N: 683901)  
 Optional: MERV 8 (P/N: 683902), Carbon (P/N: 683903), or High Efficiency/MERV13 Equivalent (P/N: 683904)

Additional Air Pressure Drop with Optional Filters				
Filter Type	Airflow CFM (m <sup>3</sup> /h)			
	300 (510)	500 (850)	700 (1190)	900 (1530)
MERV 8	0.04	0.08	0.15	0.22
Carbon	0.04	0.08	0.15	0.22
High Efficiency	0.22	0.35	0.48	0.63

**ELECTRICAL REQUIREMENTS**

120 VAC, 60 Hz, 5.5 A

**FROST CONTROL**

Cycles controlled by a temperature sensor when outdoor temperatures fall below 23°F (-5°C).

- Standard: Exhaust Defrost (H650A-Fi)
- Optional: Recirculation Defrost (H650A-Ri)

**CONTROLS**

24 VAC, 10 VA output for supply and exhaust dampers  
 Low-voltage dry contact (24 VAC, 20 VA) for:

- Occupancy Control (start/stop)
- Fan Interlock (NO and NC)
- Speed Selection
- Exhaust/Recirculation (with H650A-Ri)

Compatible With:

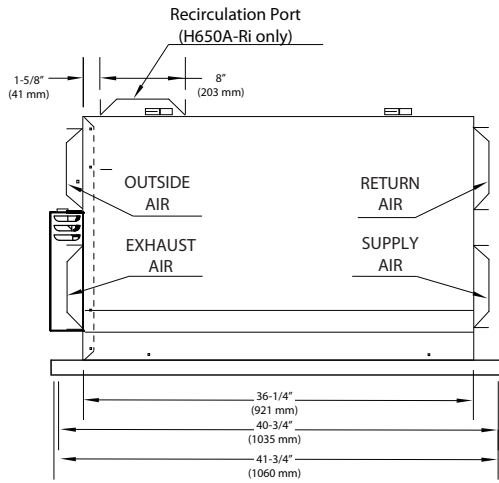
- Digital Multifunction Control (P/N: 611242FC)
- Mode Control (exchange or recirculation) (P/N: 611230)
- Humidity Control (P/N: 611224)
- Speed Control (Low/Intermittent/High) (P/N: 611229)
- 20/40/60 Minute Timer (P/N: 611228)

**APPROVALS**

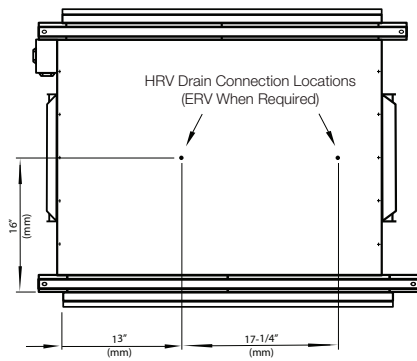
Meets Standards:  
 • UL 1812 and C22.2 no113



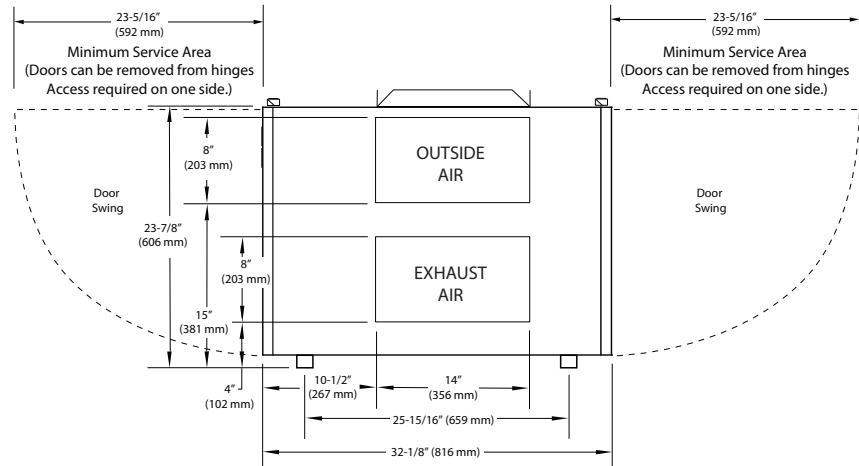
# Dimensions



**FRONT VIEW**

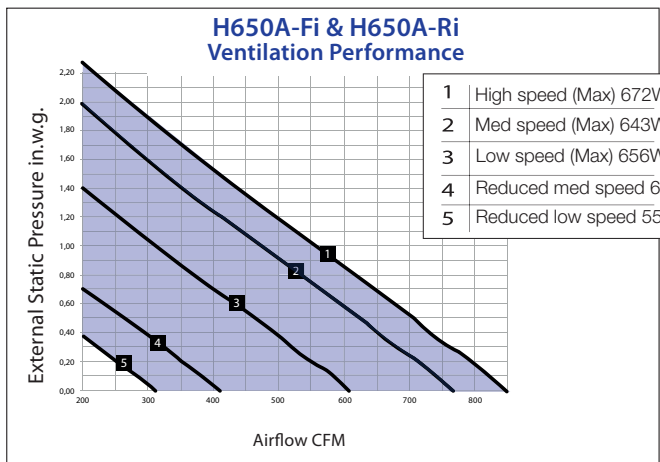


**BOTTOM VIEW**



**SIDE VIEW**

# Performance



	Sensible Recovery %
100 % Air Flow Cooling	46%
75 % Air Flow Cooling	50%
100 % Air Flow Heating	46%
75 % Air Flow Heating	46%
AHRI Core Reference Number	7987456

© 2018 American ALDES Ventilation Corporation. Reproduction or distribution, in whole or in part, of this document, in any form or by any means, without the express written consent of American ALDES Ventilation Corporation, is strictly prohibited. The information contained within this document is subject to change without prior written notice.