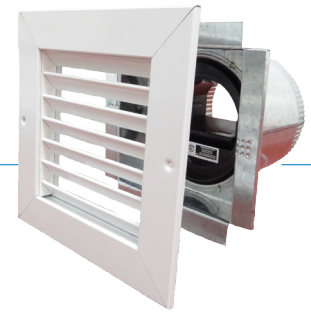


Constant Airflow Register Selection Guide



Use this table to select the appropriate constant airflow register.

Note: Grilles are included with these models.

MODEL NAME	TYPICAL APPLICATION		USE		STATIC PRESSURE OPERATING RANGE	DUCT TYPE		FIRE DAMPER INCLUDED
	New Construction	Retrofit	Exhaust	Supply		Round	Square/Rectangular	
CER-S-II	X		X		STANDARD PRESSURE 0.20 to 0.80 in. w.g.		X	
CER-R-II	X	X	X			X		
CER-FEA-II	X		X				X	X
CSR-S-II	X			X			X	
CSR-R-II	X	X		X		X		
CSR-FSA-II	X			X		X	X	X
CER-LP-S-II	X		X		LOW PRESSURE 0.10 to 0.42 in. w.g.		X	
CER-LP-R-II	X	X	X			X		
CER-LP-FEA-II	X		X				X	X
CSR-LP-S-II	X			X			X	
CSR-LP-R-II	X	X		X		X		
CSR-LP-FSA-II	X			X		X	X	X
CER-S-IIR		X	X		STANDARD PRESSURE 0.20 to 0.80 in. w.g.		X	
CER-FEA-IIR		X	X				X	X
CSR-S-IIR		X		X			X	
CSR-FSA-IIR		X		X		X	X	X
CER-LP-S-IIR		X	X		LOW PRESSURE 0.10 to 0.42 in. w.g.		X	
CER-LP-FEA-IIR		X	X				X	X
CSR-LP-S-IIR		X		X			X	
CSR-LP-FSA-IIR		X		X		X	X	X